

Step-by-Step Guide to Laparoscopic Radical Prostatectomy

Sung-Hoo Hong, MD., PhD.
Department of Urology, College of Medicine,
The Catholic University of Korea



Contents



- Introduction
- Operating Room
- Patient Positioning
- Port Placement
- Step-by-Step Surgical Techniques
- Conclusion

Introduction



- **Schuessler and colleagues, 1992**
; no clear advantages over open surgery, primarily because of excessively long procedure times (mean 9.4 hours)
- **Guillonneau and Vallancien , 1998**
; pioneered, refined, standardized and ultimately popularized the procedure



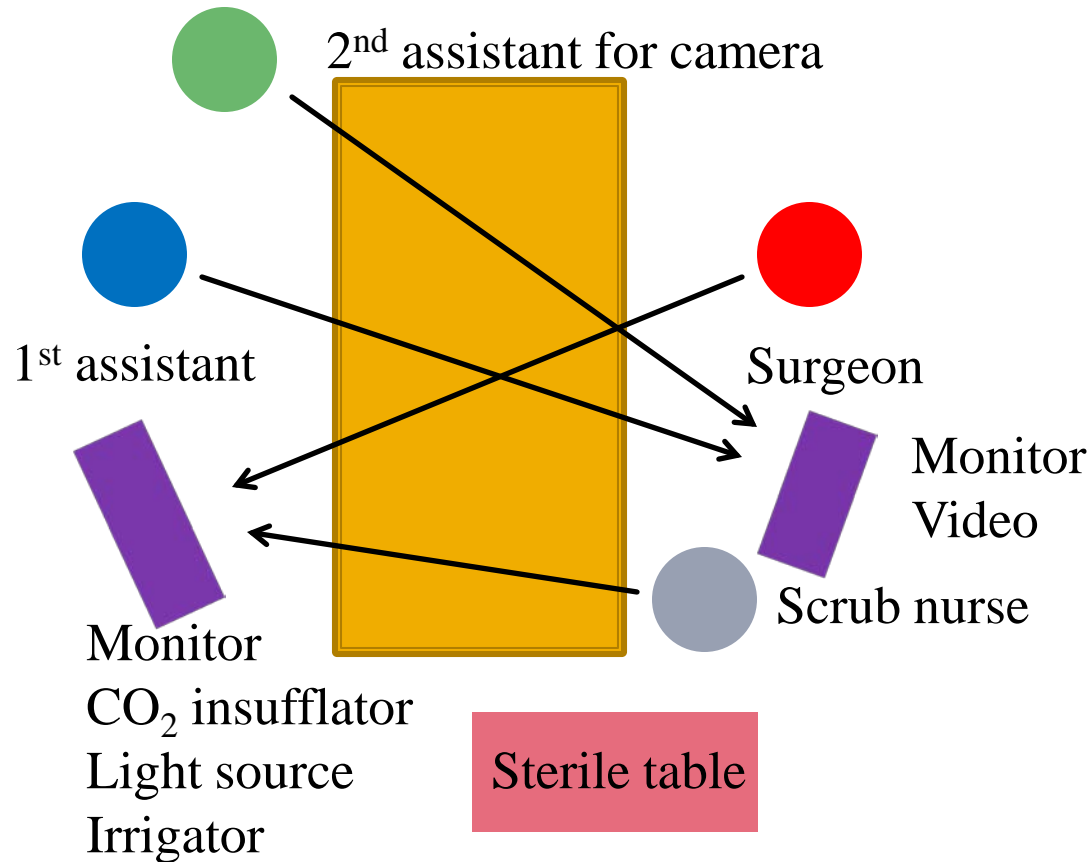
Operating Room

LRP team



- **LRP team**
; fully trained and skilled assistants,
scrub nurse and circulating nurse.
- One skilled **assistant** or other independent **surgeon** is essential for LRP.
- The **scrub nurse** is an integral part of the operative team and must be versed in the wide array of laparoscopic instruments

Operating Room Setup

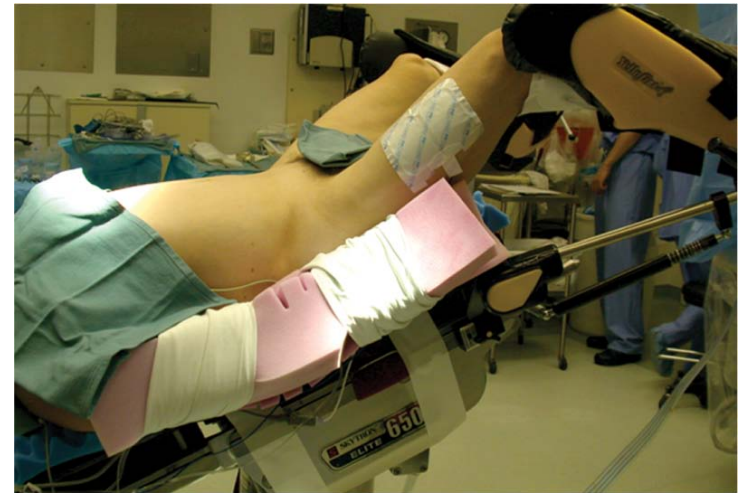


Patient Positioning



Patient Positioning

- to avoid neuromuscular injury
- a supine with arms tucked
- silicon pads to protect pressure points
- A safety belt is placed across the chest to secure the patient.
- 30° Trendelenburg position
- Pneumatic compression stockings

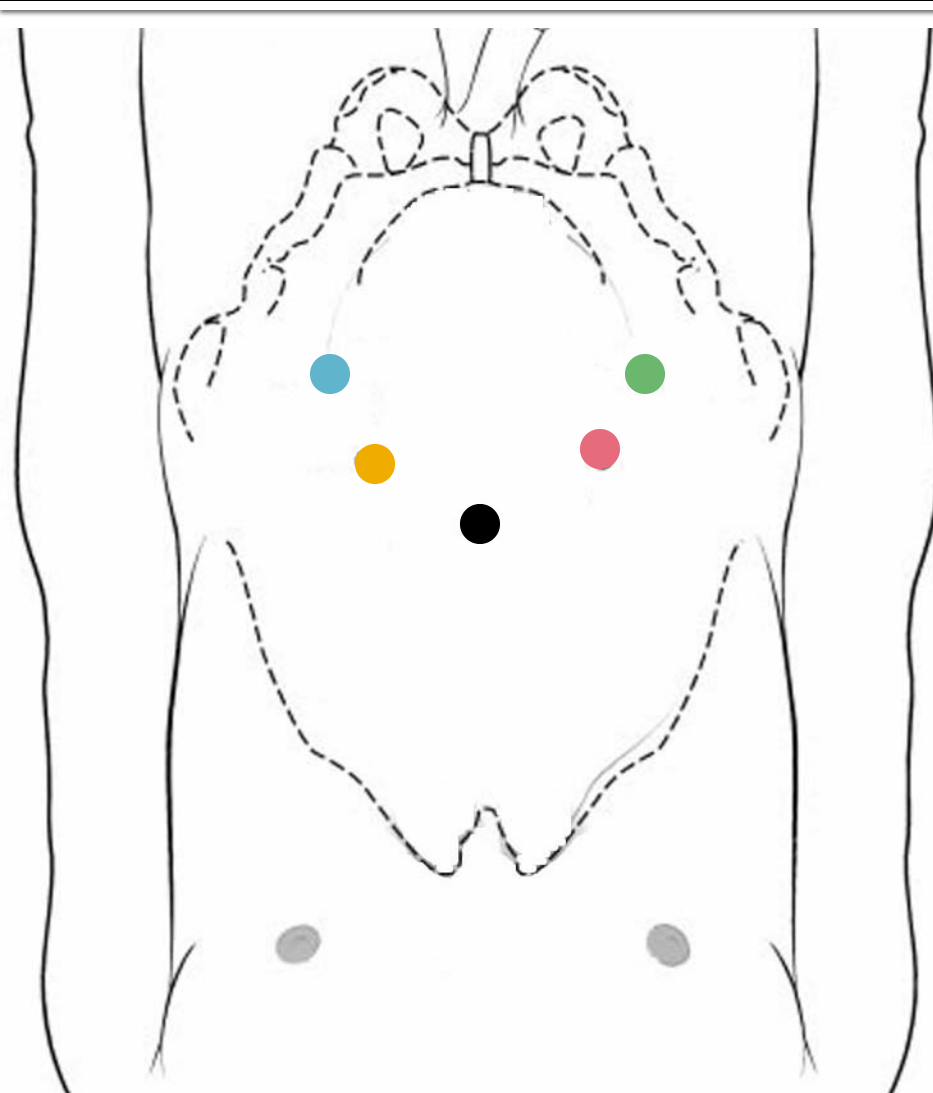


Copyright 2007 by Saunders, an imprint of Elsevier Inc.

Port Placement



Port Placement of LRP



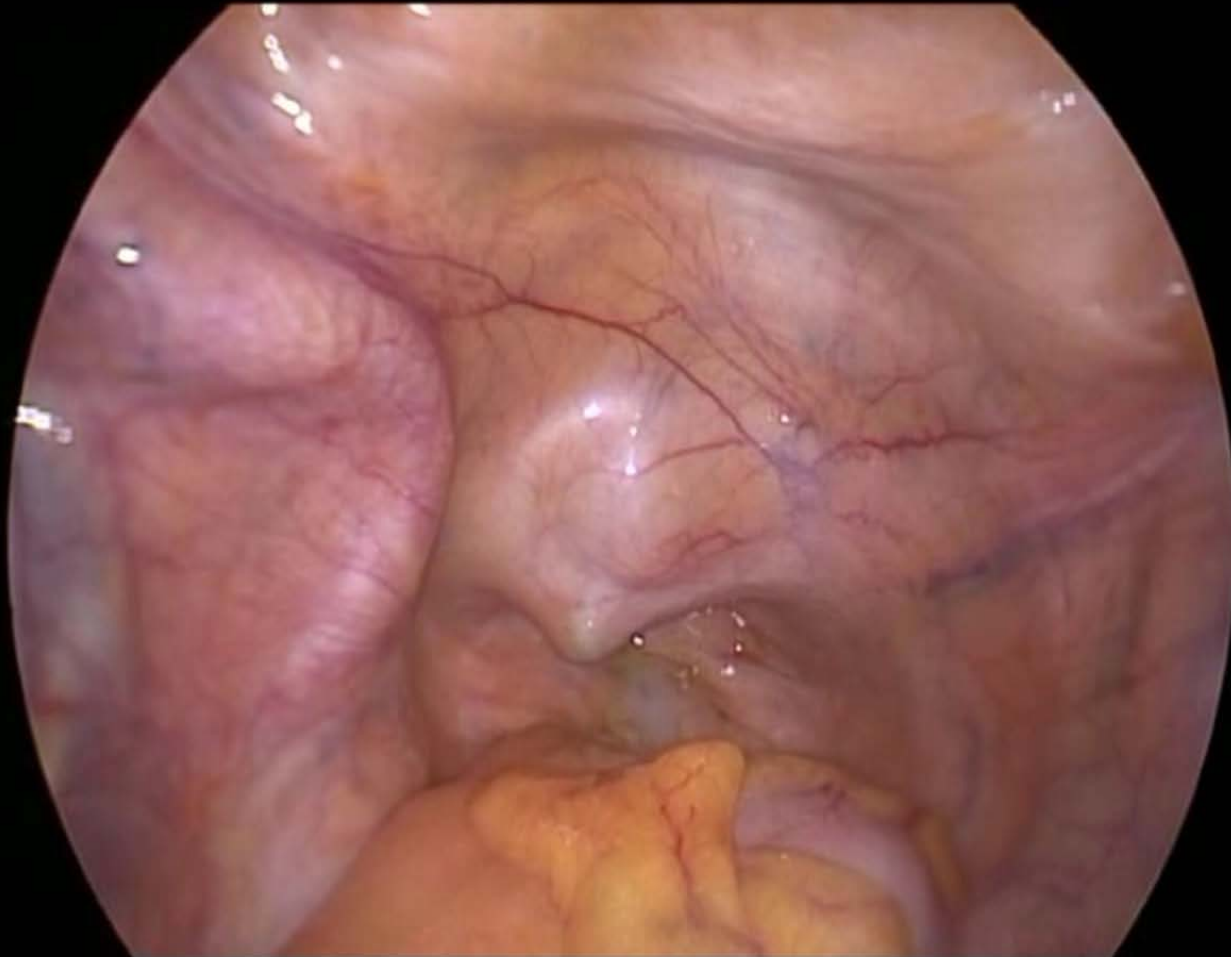
- Camera
- Surgeon's Lt. Hand
Bipolar forceps
- Surgeon's Rt. Hand
Monopolar scissors
- Assistant's Lt. Hand
Suction & irrigation device
- Assistant's Rt. Hand
Grasping forceps

Step-by-Step Surgical Techniques



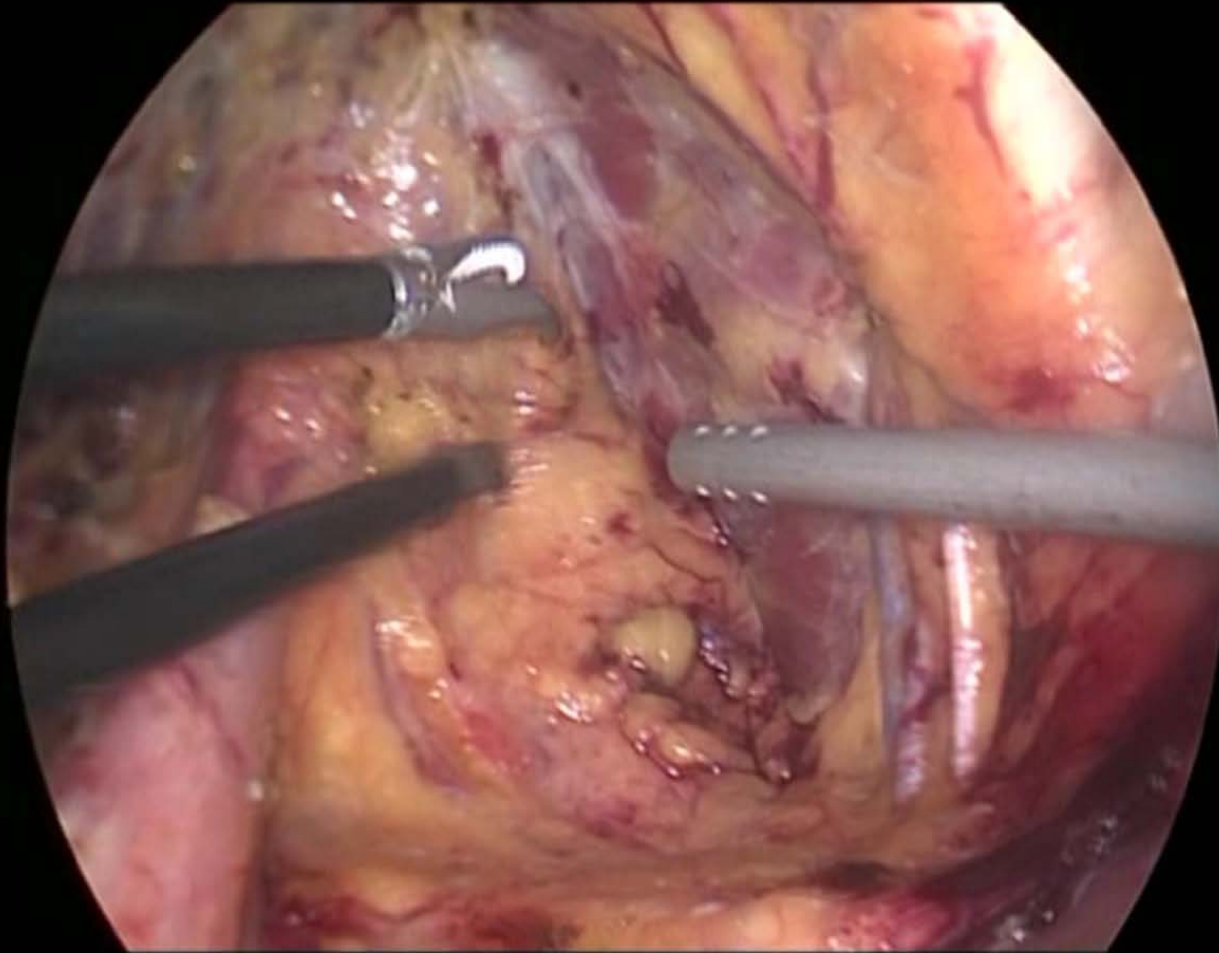
Step 1

; Entering Retzius' space

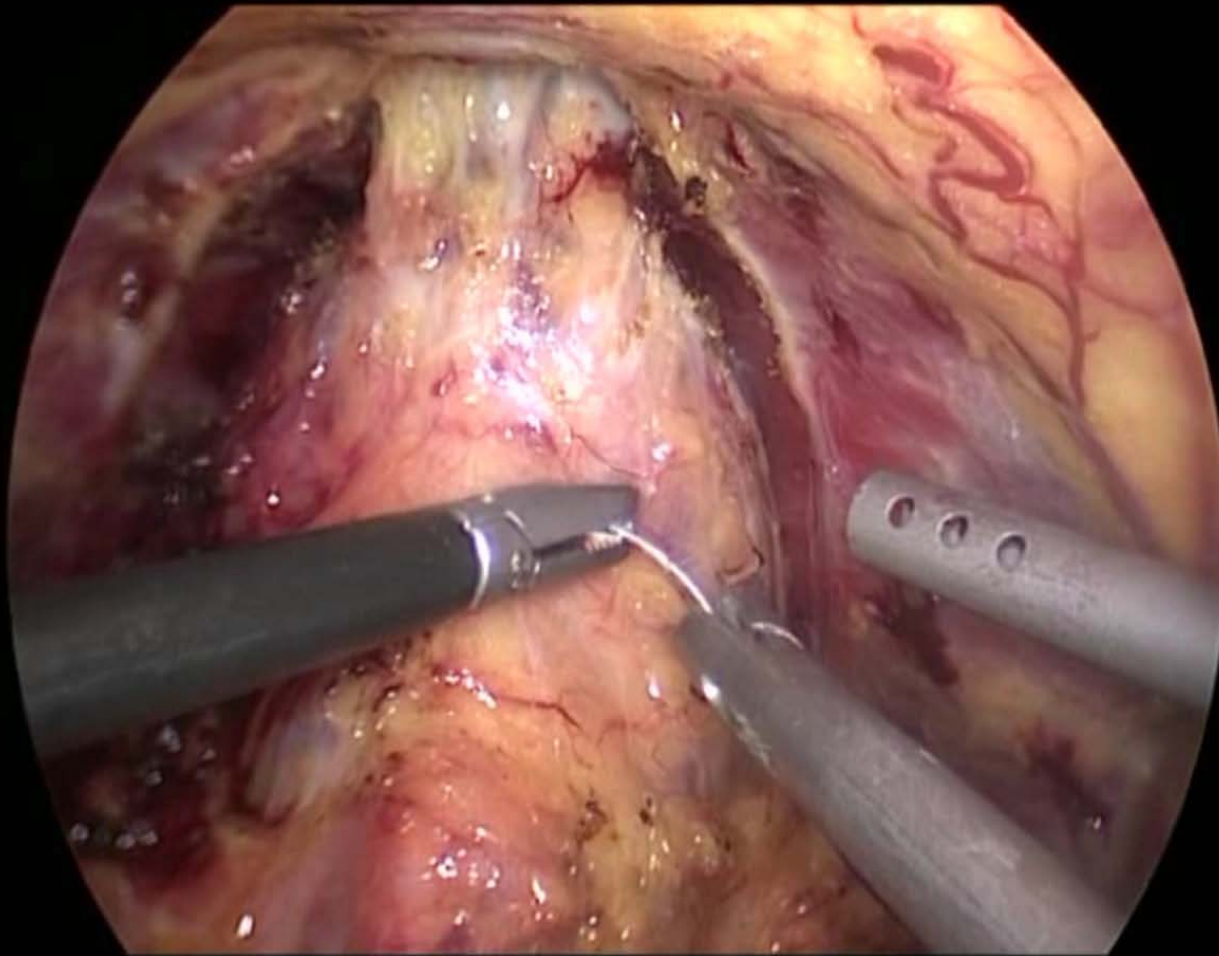


Step 2

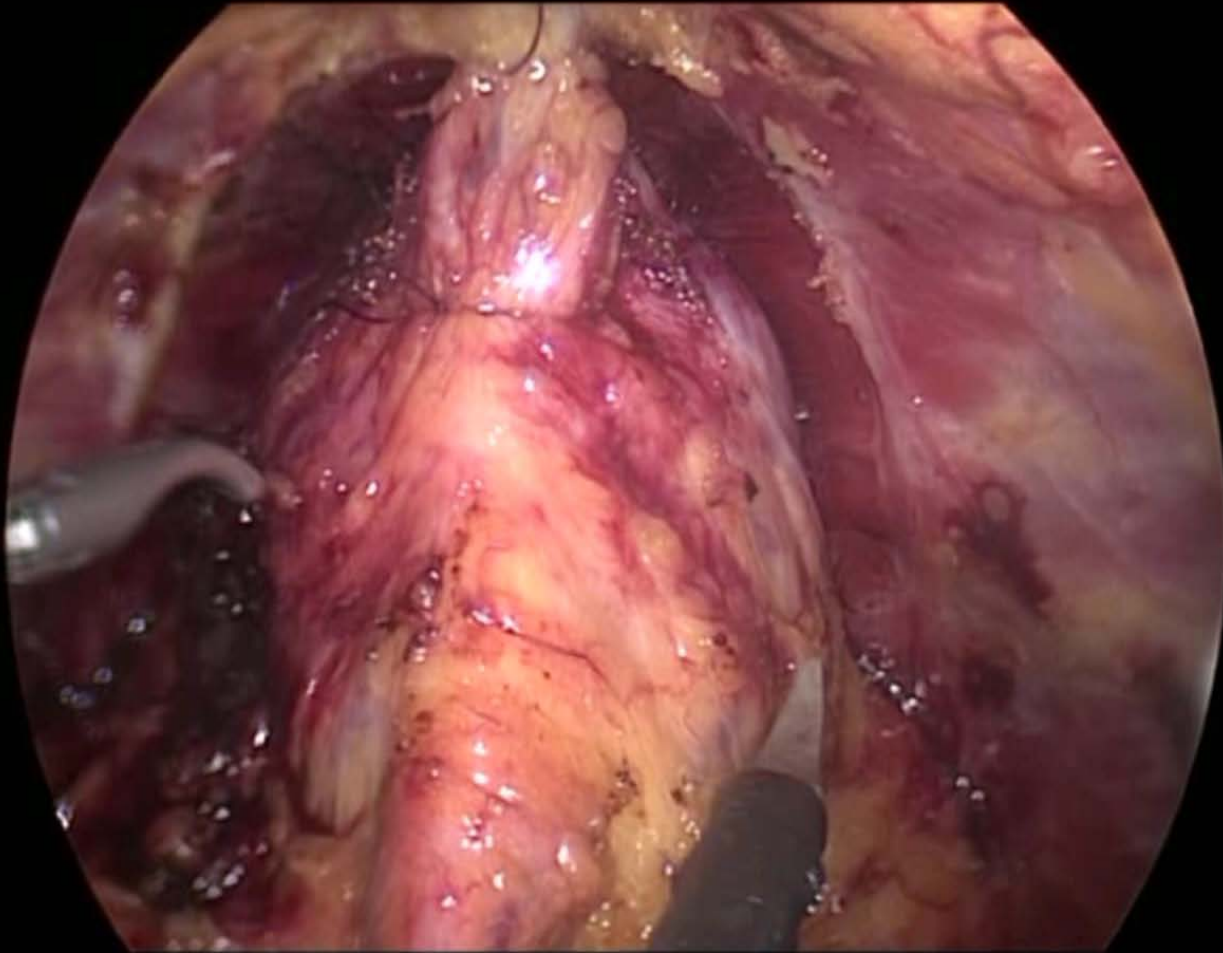
; Endopelvic fascia incision



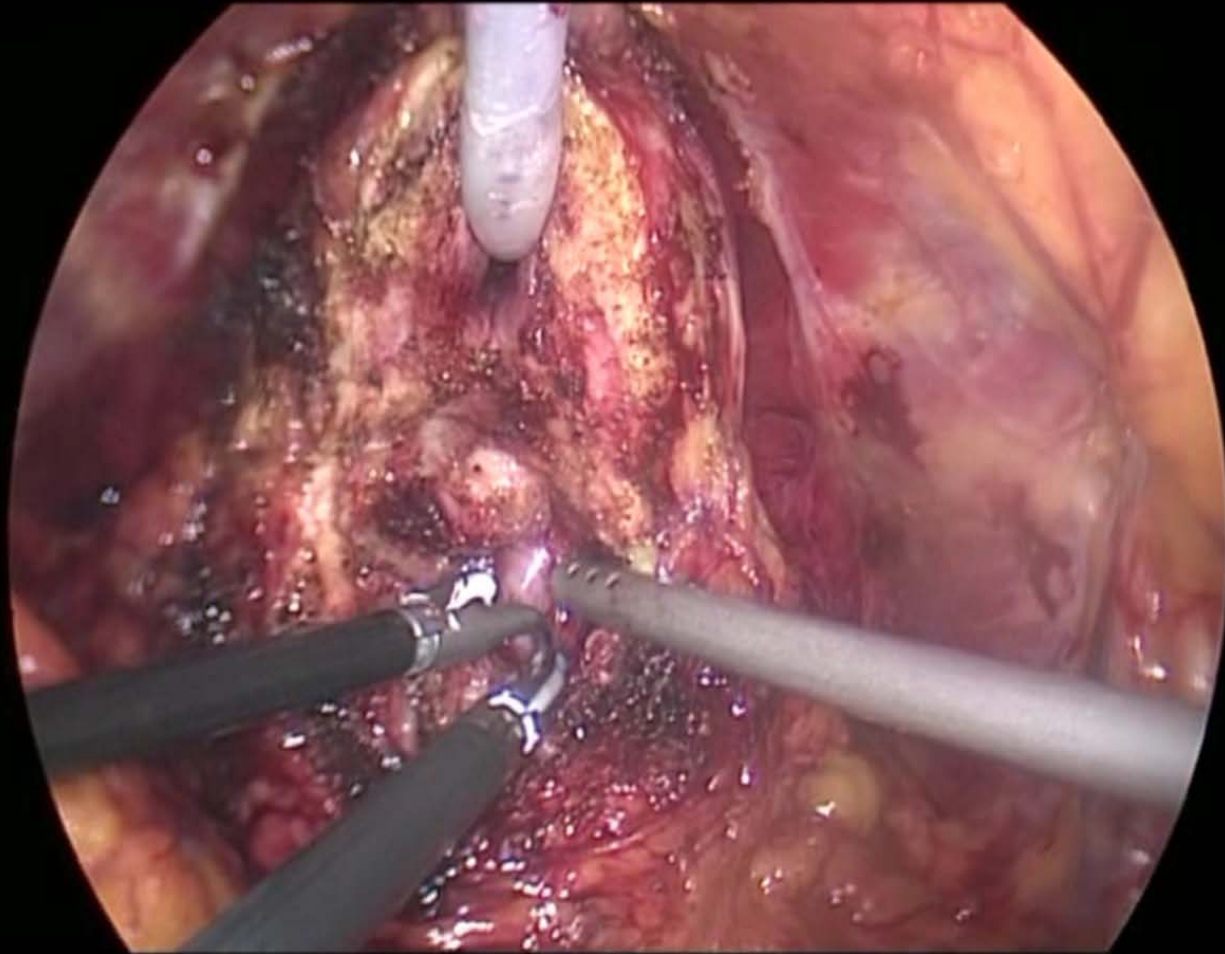
Step 3 ; DVC ligation



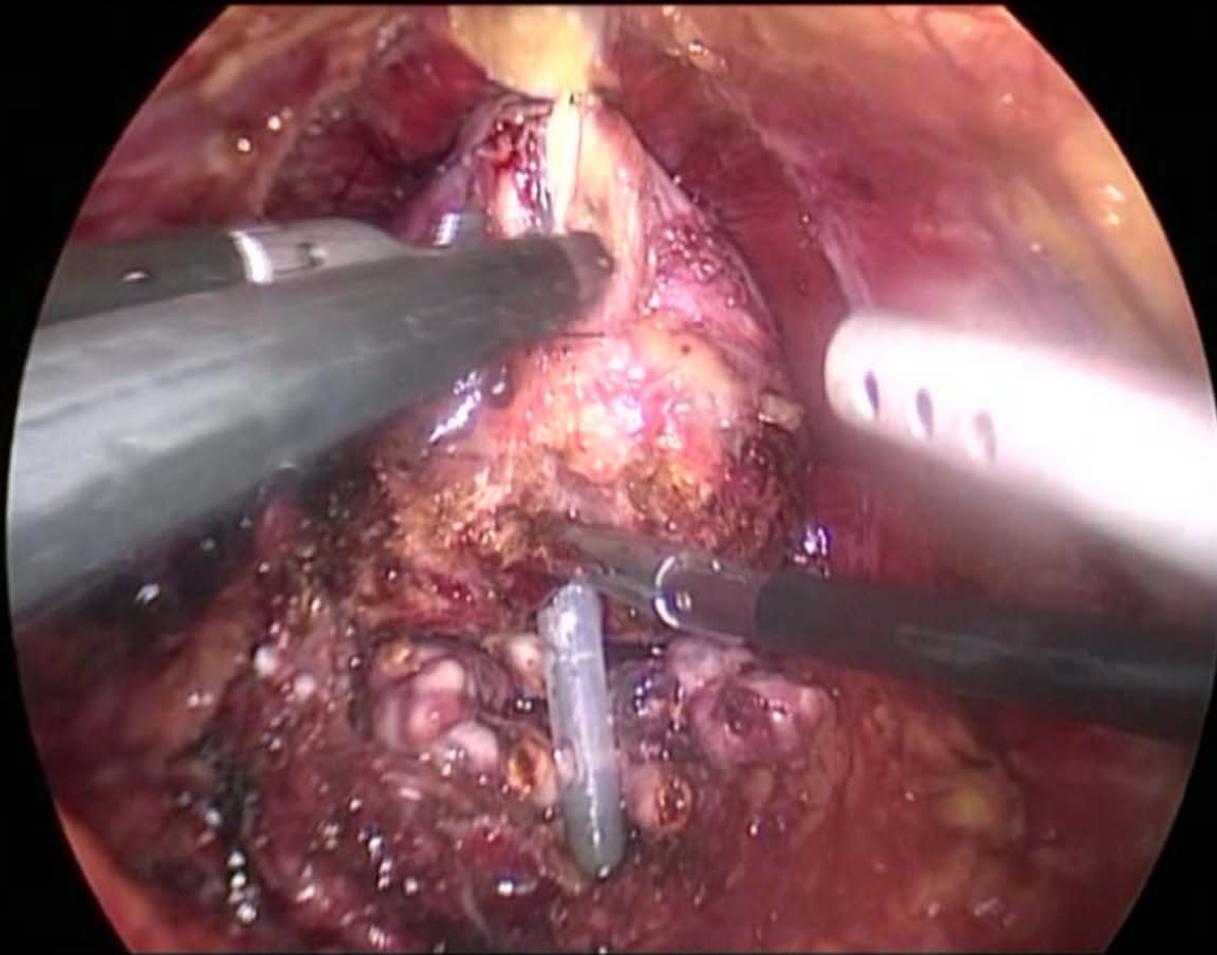
Step 4 ; Bladder neck dissection



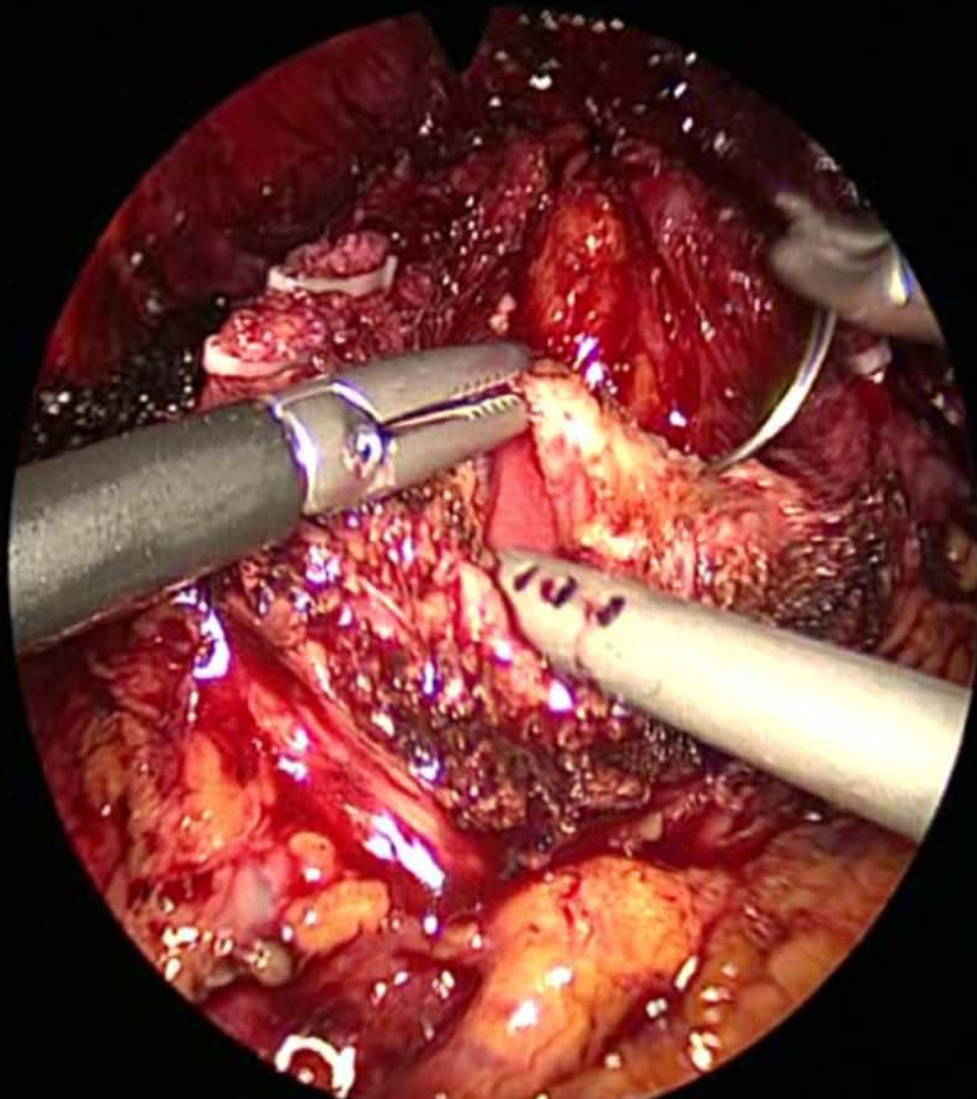
Step 5 ; Posterior dissection



Step 6 ; Apical dissection



Step 7 ; Anastomosis



Conclusion



Conclusion



- Laparoscopy is not dying for radical prostatectomy. It is alive and well.
- In the hands of skilled laparoscopic surgeons, pure laparoscopic radical prostatectomy is equivalent to robotic-assisted laparoscopic prostatectomy.
- As the next step in the development of laparoscopy, new technologies are involved in the operating room to reduce morbidity and improve functional and oncologic results.